

CABRESTANTE ELECTRICO DE ELEVACION DC 800

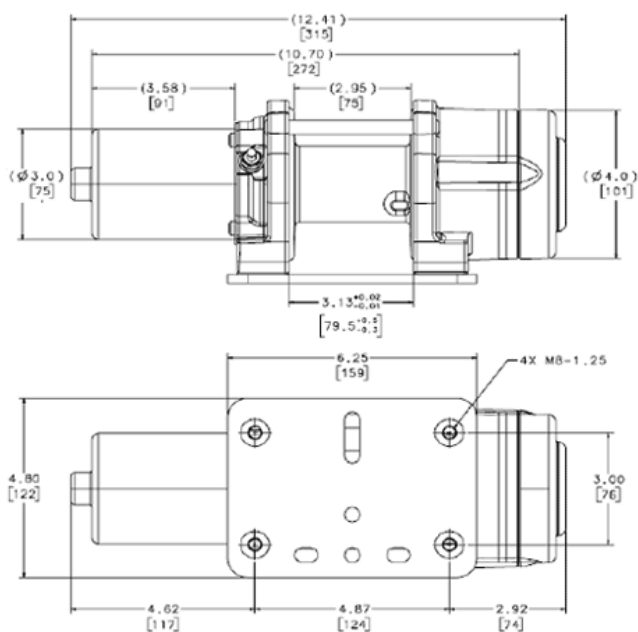


p/n 82467 (12v)
p/n 82468 (24v)

Características:

- ❖ Capacidad de elevación: 363 kg.
- ❖ Motor: 12 o 24 v
- ❖ Relación de engrane: 154:1
- ❖ Cable de acero: 5mm x 15m
- ❖ Freno de disco
- ❖ Peso aproximado: 7 Kg.
- ❖ Caja con relé compacto
- ❖ Mando de cable (3.7 m)
- ❖ Guía de rodillos

Dimensiones: (en mm)



DISTRIBUIDO POR:

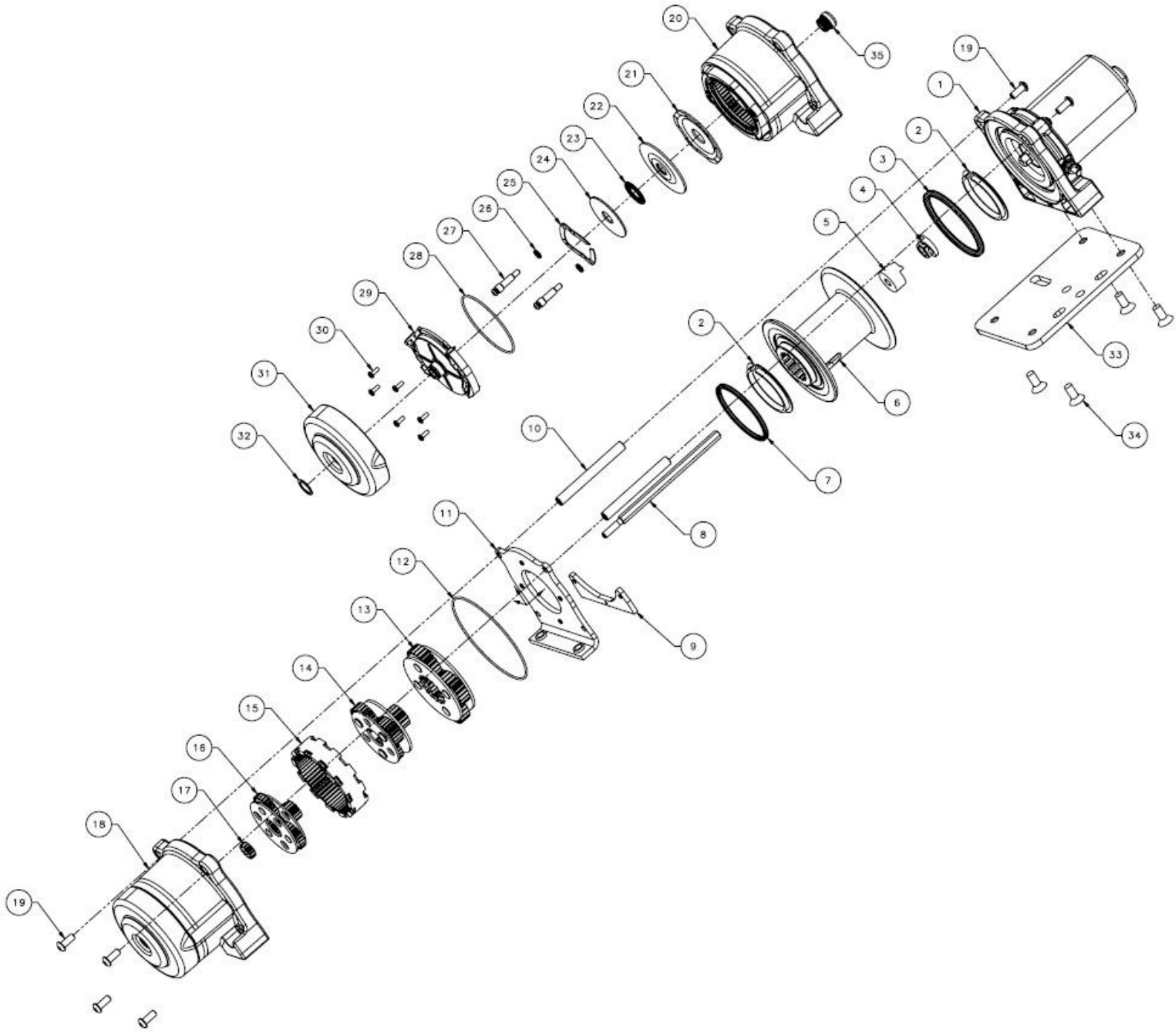




Service Part Kit List: DC800 Hoist-12V (82467)

Item Reference	Description	Item/Kit No.
1	MOTOR, CAN, SEALED, 3 IN, JOHNSON	73900
2	BUSHING, DRUM, A2000	69637
6	DRUM, GROOVED, ALUM, WNCH, ATV	74922
8	SHAFT, DRIVE, WINCH, HEX	74997
13	CARRIER ASSY, STAGE 3, 2.5	75005
14	CARRIER ASSY, STAGE 2, 2.5	75004
15	GEAR, RING, PM, ODC, 2.5	74918
16	CARRIER ASSY, STAGE 1, 2.5	75002
17	GEAR, SUN, 12T, S1	74999
18	HOUSING ASSY, RT25, CLUTCHLESS	82134
29	CAP, CLUTCH, WINCH, ATV	79594
	WINCH SEAL KIT	74925
3	SEAL, DRUM, FLANGE X-RING, R WN (Qty. 1)	
7	SEAL, GEAR-SIDE, DRUM, X-RING (Qty. 1)	
12	SEAL O-RING 4.05IN NBR 70A YELLOW (Qty.1)	
26	SEAL, RING, QUAD, 1/4 IN (Qty. 2)	
28	SEAL O-RING 2.8IN NBR 70A YELLOW (Qty. 1)	
	WINCH MOTOR COUPLER KIT	74995
4	COUPLER, CAM, MOTOR, 12MM (Qty. 1)	
5	COUPLER, FOLLOWER, HEX, WINCH (Qty. 1)	
	WINCH TIE ROD KIT	74920
10	TIE ROD, METRIC, TAPD, 3.5" PLATED (Qty. 2)	
19	CPSCR, BTN HD, M6-1.0X16, ZN (Qty. 4)	
	WNCH DRUM SUPPORT KIT	74917
9	PLATE, PROTECTOR, WIRE ROPE (Qty. 1)	
11	DRUM SUPPORT, GS, 2.5 (Qty. 1)	
19	CPSCR, BTN HD, M6-1.0X16, ZN (Qty. 2)	
	HOUSING ASSY, RT25, CLUTCHLESS	82134
20	HOUSING, GEAR, WINCH, ATV, MACHINED (Qty. 1)	
21	PLATE RETAINING BRAKE RT/XT SLOTTED (Qty. 1)	
22	DISC BRAKE WINCH RT/XT (Qty. 1)	
23	BEARING ROLLER THRUST 15mm (Qty. 1)	
24	WASHER THRUST ID 15.24mm (Qty. 1)	
25	SPRING BRAKE WAVE ATV WINCH (Qty. 1)	
26	SEAL, RING, QUAD, 1/4 IN (Qty. 2)	

Item Reference	Description	Item/Kit No.
27	PIN, CLUTCH, SBC, WINCH (Qty. 2)	
28	SEAL O-RING 2.8IN NBR 70A YELLOW (Qty. 1)	
29	CAP, CLUTCH, WINCH, ATV (Qty. 1)	
30	CPSCR, 6 X 3/8, PLASTITE, BTN HD, TORX (Qty. 6)	
31	COVER END CLUTCH BLOCKED (Qty. 1)	
32	(VIMS) RING, RETAINING, INVERTED (Qty. 1)	
35	ROLLER CLUTCH ASSY WINCH RT/XT (Qty.1)	
	BRAKE KIT WINCH RT/XT	74923
21	PLATE RETAINING BRAKE RT/XT SLOTTED (Qty. 1)	
22	DISC BRAKE WINCH RT/XT (Qty. 1)	
23	BEARING ROLLER THRUST 15mm (Qty. 1)	
24	WASHER THRUST ID 15.24mm (Qty. 1)	
25	SPRING BRAKE WAVE ATV WINCH (Qty. 1)	
28	SEAL O-RING 2.8IN NBR 70A YELLOW (Qty. 1)	
	WINCH CLUTCH GROUP KIT	74926
27	PIN, CLUTCH, SBC, WINCH (Qty. 2)	
33	PLATE MTG RT30 INDUST (Qty. 1)	81879
34	CPSCR_ FLT HX HD_M8-1.25 X20MMZINC (Qty. 4)	75599
	LABEL DC800	82477
	LABEL WARNING MOTOR DC800	82479





Service Part Kit List: DC800 Hoist-24V (82468)

Item Reference	Description	Item/Kit No.
1	MOTOR SVC 24VDC	82181
2	BUSHING, DRUM, A2000	69637
6	DRUM, GROOVED, ALUM, WNCH, ATV	74922
8	SHAFT, DRIVE, WINCH, HEX	74997
13	CARRIER ASSY, STAGE 3, 2.5	75005
14	CARRIER ASSY, STAGE 2, 2.5	75004
15	GEAR, RING, PM, ODC, 2.5	74918
16	CARRIER ASSY, STAGE 1, 2.5	75002
17	GEAR, SUN, 12T, S1	74999
18	HOUSING ASSY, RT25, CLUTCHLESS	82134
29	CAP, CLUTCH, WINCH, ATV	79594
	WINCH SEAL KIT	74925
3	SEAL, DRUM, FLANGE X-RING, R WN (Qty. 1)	
7	SEAL, GEAR-SIDE, DRUM, X-RING (Qty. 1)	
12	SEAL O-RING 4.05IN NBR 70A YELLOW (Qty.1)	
26	SEAL, RING, QUAD, 1/4 IN (Qty. 2)	
28	SEAL O-RING 2.8IN NBR 70A YELLOW (Qty. 1)	
	WINCH MOTOR COUPLER KIT	74995
4	COUPLER, CAM, MOTOR, 12MM (Qty. 1)	
5	COUPLER, FOLLOWER, HEX, WINCH (Qty. 1)	
	WINCH TIE ROD KIT	74920
10	TIE ROD, METRIC, TAPD, 3.5" PLATED (Qty. 2)	
19	CPSCR, BTN HD, M6-1.0X16, ZN (Qty. 4)	
	WNCH DRUM SUPPORT KIT	74917
9	PLATE, PROTECTOR, WIRE ROPE (Qty. 1)	
11	DRUM SUPPORT, GS, 2.5 (Qty. 1)	
19	CPSCR, BTN HD, M6-1.0X16, ZN (Qty. 2)	
	HOUSING ASSY, RT25, CLUTCHLESS	82134
20	HOUSING, GEAR, WINCH, ATV, MACHINED (Qty. 1)	
21	PLATE RETAINING BRAKE RT/XT SLOTTED (Qty. 1)	
22	DISC BRAKE WINCH RT/XT (Qty. 1)	
23	BEARING ROLLER THRUST 15mm (Qty. 1)	
24	WASHER THRUST ID 15.24mm (Qty. 1)	
25	SPRING BRAKE WAVE ATV WINCH (Qty. 1)	
26	SEAL, RING, QUAD, 1/4 IN (Qty. 2)	

Item Reference	Description	Item/Kit No.
27	PIN, CLUTCH, SBC, WINCH (Qty. 2)	
28	SEAL O-RING 2.8IN NBR 70A YELLOW (Qty. 1)	
29	CAP, CLUTCH, WINCH, ATV (Qty. 1)	
30	CPSCR, 6 X 3/8, PLASTITE, BTN HD, TORX (Qty. 6)	
31	COVER END CLUTCH BLOCKED (Qty. 1)	
32	(VIMS) RING, RETAINING, INVERTED (Qty. 1)	
35	ROLLER CLUTCH ASSY WINCH RT/XT (Qty.1)	
	BRAKE KIT WINCH RT/XT	74923
21	PLATE RETAINING BRAKE RT/XT SLOTTED (Qty. 1)	
22	DISC BRAKE WINCH RT/XT (Qty. 1)	
23	BEARING ROLLER THRUST 15mm (Qty. 1)	
24	WASHER THRUST ID 15.24mm (Qty. 1)	
25	SPRING BRAKE WAVE ATV WINCH (Qty. 1)	
28	SEAL O-RING 2.8IN NBR 70A YELLOW (Qty. 1)	
	WINCH CLUTCH GROUP KIT	74926
27	PIN, CLUTCH, SBC, WINCH (Qty. 2)	
33	PLATE MTG RT30 INDUST (Qty. 1)	81879
34	CPSCR_ FLT HX HD_M8-1.25 X20MMZINC (Qty. 4)	75599
	LABEL-DC800-24VDC	82829
	LABEL WARNING MOTOR DC800	82479

